



dbm universal spring cylinder

The “Adaptomizable” Spring Plunger.

TENSION END ACCESSORIES

Standard accessories for use on the tension end (small diameter threaded end) of the dbm universal spring cylinder plunger.

Remove locknut if required and use thread locking compound to secure accessory.

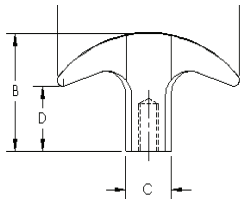
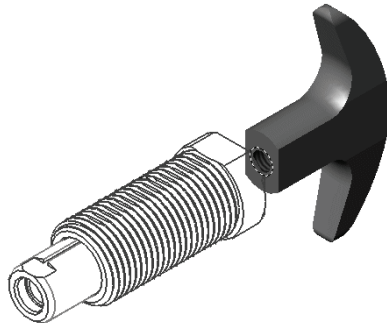


N63 W23583 Main Street
Post Office Box 482
Sussex, WI 53089
(262) 246-8075
FAX: (262) 246-9075
mail@dbminnovation.com
www.dbminnovation.com



universal spring cylinder

The "Adaptomizable" Spring Plunger.



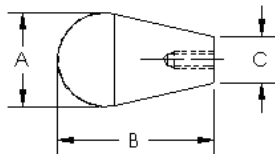
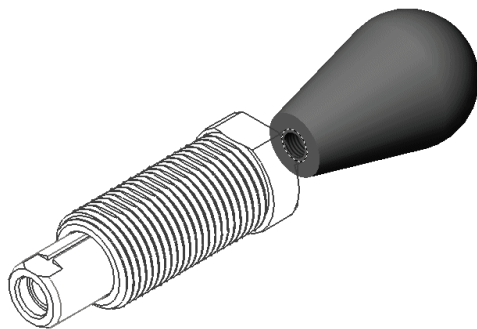
PLASTIC CURVED T-HANDLE

Material: Black Phenolic — Brass Insert

TENSION END ACCESSORIES

PLASTIC CURVED T-HANDLE DIMENSIONS FOR THREADED AND NON-THREADED STYLES

PLUNGER DIA.	5/16"	1/2"	5/8"	1"
PART NUMBER		DK-75	DK-76	
A		2.25	2.25	
B		1.25	1.25	
C		.56	.56	
D		.69	.69	
Insert Thread		1/4-20	5/16-18	
Thread Depth		.50	.50	



PLASTIC TAPERED KNOB

Material: Black Phenolic — Brass Insert

PLASTIC TAPERED KNOB DIMENSIONS FOR THREADED AND NON-THREADED STYLES

PLUNGER DIA.	5/16"	1/2"	5/8"	1"
PART NUMBER	BD-0	BD-6	BD-25	BD-35
A	.75	1.00	1.63	1.63
B	1.25	1.63	2.50	2.50
C	.38	.50	.88	0.88
Insert Thread	#6-32	1/4-20	5/16-18	1/2-13
Thread Depth	.31	.44	.44	.63

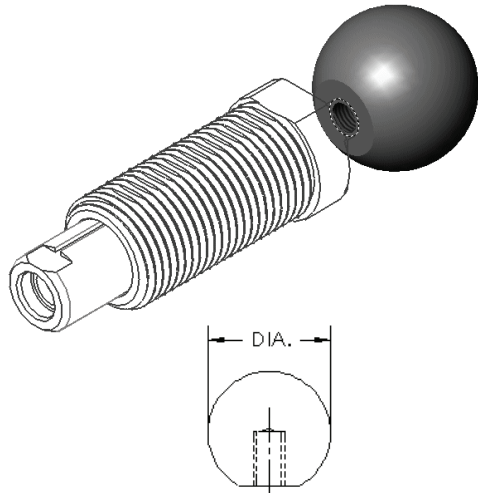
The specifications and data in this publication are believed to be accurate and reliable. It is the responsibility of the product user to determine the suitability of DBM Innovation Inc. products for a specific application. While defective products will be replaced without charge if promptly returned, no liability is assumed beyond such replacement. Specifications subject to change without notice. © 2011 DBM Innovation Inc. All rights reserved.



universal spring cylinder

The "Adaptomizable" Spring Plunger.

TENSION END ACCESSORIES

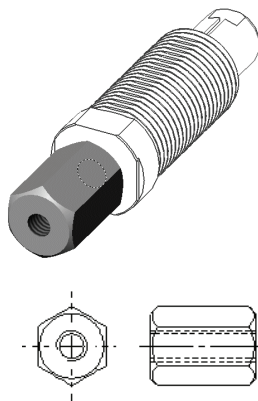


PLASTIC BALL KNOB DIMENSIONS FOR THREADED AND NON-THREADED STYLES

PLUNGER DIA.	5/16"	1/2"	5/8"	1"
PART NUMBER	B-60	B-3	B-13	B-10
DIA.	.75	1.00	1.38	1.88
Insert Thread	#6-32	1/4-20	5/16-18	1/2-13
Thread Depth	.31	.44	.44	.63

PLASTIC BALL KNOB

Material: Black Phenolic — Brass Insert



STEEL COUPLING NUT DIMENSIONS FOR THREADED AND NON-THREADED STYLES.

PLUNGER DIA.	5/16"	1/2"	5/8"	1"
PART NUMBER	91920A454	CN-0	CN-1	CN-3
Thread	#6-32	1/4-20	5/16-18	1/2-13
Overall Length	.31	.88	.88	1.50
Hex Size	.31	.56	.56	.88

STEEL COUPLING NUT

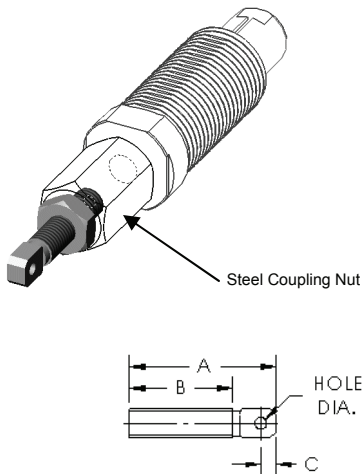
Material: Cold Finished Steel, Case Hardened — Black Oxide Finish.
Except 5/16" which is Plain Steel — Zinc Plated Finish.



universal spring cylinder

The "Adaptomizable" Spring Plunger.

TENSION END ACCESSORIES

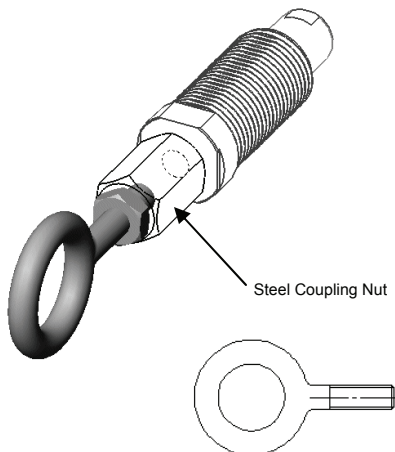


SPRING ANCHOR DIMENSIONS FOR THREADED AND NON-THREADED STYLES. USE WITH STEEL COUPLING NUT.

PLUNGER DIA.	5/16"	1/2"	5/8"	1"
PART NUMBER	CSA-50	CSA-70		
Thread	#6-32	1/4-20		
A	.63	1.25		
B	.40	.88		
C	.07	.13		
Hole Size	.05	.10		

SPRING ANCHOR

Material: C-12114 Steel — Black Oxide Finish



STEEL EYE BOLT DIMENSIONS FOR THREADED AND NON-THREADED STYLES. USE WITH STEEL COUPLING NUT.

PLUNGER DIA.	5/16"	1/2"	5/8"	1"
PART NUMBER		FP-1	FP-2	FP-5
Thread		1/4-20	5/16-18	1/2-13
Shank Length		1.00	1.13	1.50
EYE ID		.75	.88	1.19

STEEL EYE BOLT

Material: Forged Carbon Steel

The specifications and data in this publication are believed to be accurate and reliable. It is the responsibility of the product user to determine the suitability of DBM Innovation Inc. products for a specific application. While defective products will be replaced without charge if promptly returned, no liability is assumed beyond such replacement. Specifications subject to change without notice. © 2011 DBM Innovation Inc. All rights reserved.