



dbm universal spring cylinder

The "Adaptomizable" Spring Plunger.

MOUNTING ACCESSORIES

- The dbm universal spring cylinder retract lock
- Standard accessories for mounting the dbm universal spring cylinder

dbm

INNOVATION INC.

Post Office Box 482

Sussex, WI 53089

(262) 246-8075

FAX: (262) 246-9075

mail@dbminnovation.com

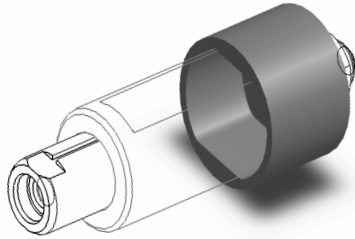
www.dbminnovation.com



universal spring cylinder

The "Adaptomizable" Spring Plunger.

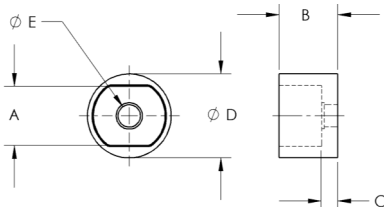
CAD DOWNLOAD LINKS



MOUNTING ACCESSORIES

RETRACT LOCK DIMENSIONS

FOR THREADED AND NON-THREADED STYLES

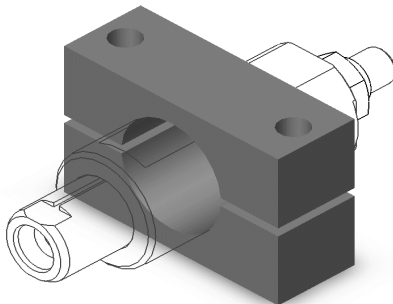


RETRACT LOCK

Material: Cold Finished Steel – Hardened with Black Oxide Finish
 NOTE: When using the retract lock, the plunger extends approx. .05" from body in locked position and .03" less than full stroke in extended position.

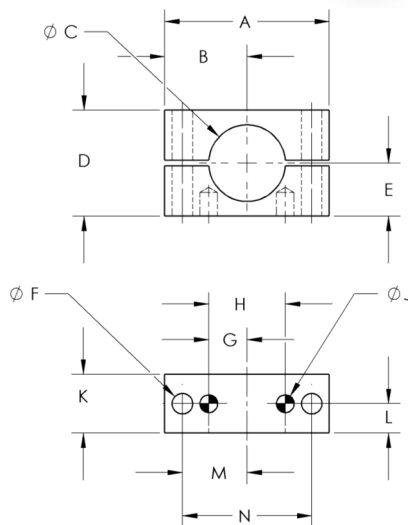
PLUNGER DIA.	5/16"	1/2"	5/8"	1"
STROKE	3/8"	9/16"	3/4"	1 1/8"
PART NUMBER	L031-STL2	L050-STL2	L063-STL2	L100-STL2
A	.442	.724	.910	1.382
B	.45	.70	.89	1.33
C	.125	.188	.188	.250
D	.625	1.000	1.250	1.875
E	.154	.266	.328	.516

Operation: Grasp lock (or handle, if used) and pull to retract plunger. Rotate 90° to lock into the retracted position.



MOUNTING BLOCK DIMENSIONS

FOR NON-THREADED STYLE ONLY



MOUNTING BLOCK

Material: Cold Finished Steel - Black Oxide Finish

PLUNGER DIA.	5/16"	1/2"	5/8"	1"
PART NUMBER	M031-STL	M050-STL	M063-STL	M100-STL
A	1.125	1.750	2.250	3.250
B	.563	.875	1.125	1.625
C	.500 +.002/-.000	.813 +.002/-.000	1.000 +.002/-.000	1.500 +.003/-.000
D	.750	1.125	1.500	2.250
E	.375 +/- .002	.563 +/- .002	.750 +/- .002	1.125 +/- .002
F	.141	.219	.281	.406
G	.250 +/- .001	.407 +/- .001	.500 +/- .001	.750 +/- .001
H	.500 +/- .001	.813 +/- .001	1.000 +/- .001	1.500 +/- .001
J	.1259" x .16 DP.	.1884" x .25 DP.	.2509" x .31 DP.	.3759" x .50 DP.
K	.500	.625	.750	1.000
L	.250	.313	.375	.500
M	.437	.688	.875	1.250
N	.875	1.375	1.750	2.500

* +/- .0005

The specifications and data in this publication are believed to be accurate and reliable. It is the responsibility of the product user to determine the suitability of DBM Innovation Inc. products for a specific application. While defective products will be replaced without charge if promptly returned, no liability is assumed beyond such replacement. Specifications subject to change without notice. © DBM Innovation Inc. All rights reserved.

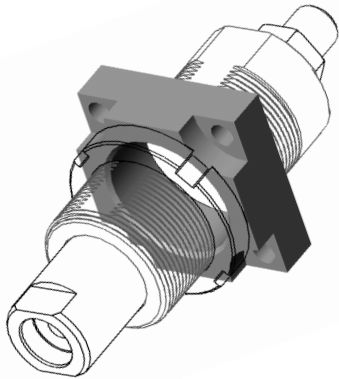


universal spring cylinder

The "Adaptomizable" Spring Plunger.

MOUNTING ACCESSORIES


CAD DOWNLOAD LINKS 

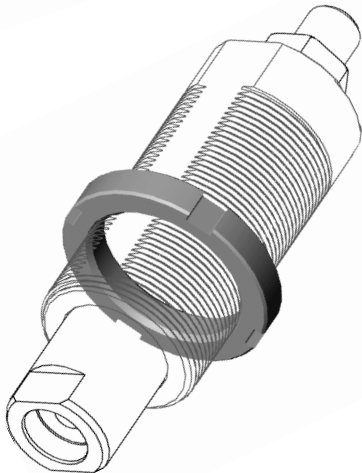
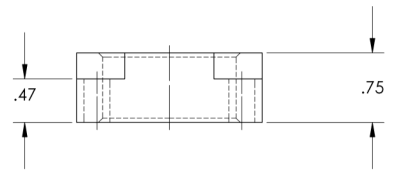
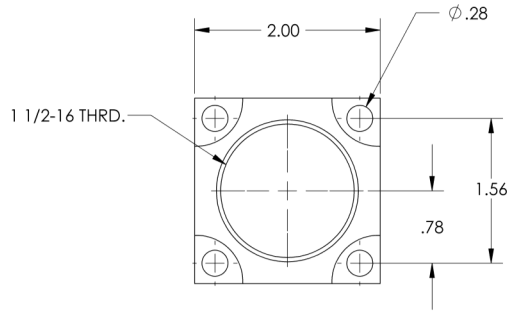


MOUNTING FLANGE

For the Threaded Style Only.
For 1" Plunger Diameter Only.

Material: Steel


 Part No. 64-0115-00

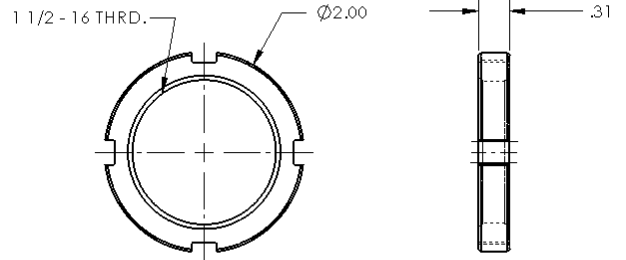


RETAINING COLLAR

For the Threaded Style Only.
For 1" Plunger Diameter Only.

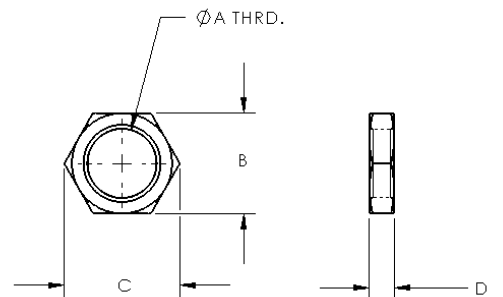
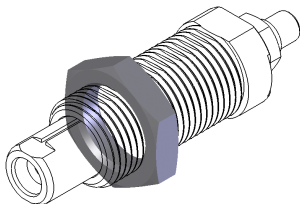
Material: Steel

 Part No. 64-0015-00






LOCK NUT

Material: Steel



LOCK NUT DIMENSIONS FOR THREADED STYLE ONLY

PLUNGER DIA.	5/16"	1/2"	5/8"	1"
PART NUMBER	250-0405 	250-0399 	250-0400 	
A	1/2-20 UNF	3/4-16 UNF	1-12 UNF	
B	0.62	1.00	1.25	
C	0.70	1.15	1.44	
D	0.13	0.25	0.25	

The specifications and data in this publication are believed to be accurate and reliable. It is the responsibility of the product user to determine the suitability of DBM Innovation Inc. products for a specific application. While defective products will be replaced without charge if promptly returned, no liability is assumed beyond such replacement. Specifications subject to change without notice. © DBM Innovation Inc. All rights reserved.

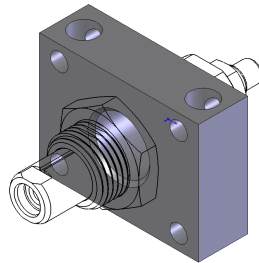
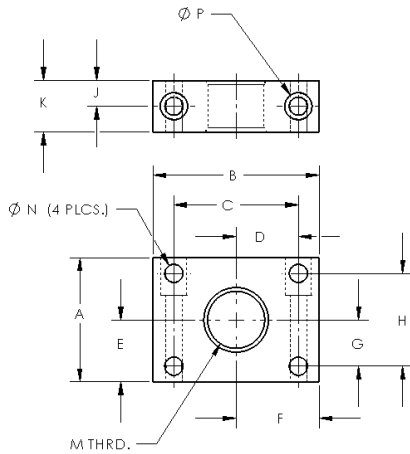


universal spring cylinder

The "Adaptomizable" Spring Plunger.




CAD DOWNLOAD LINKS 

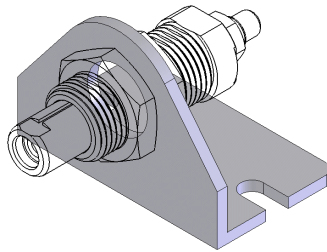
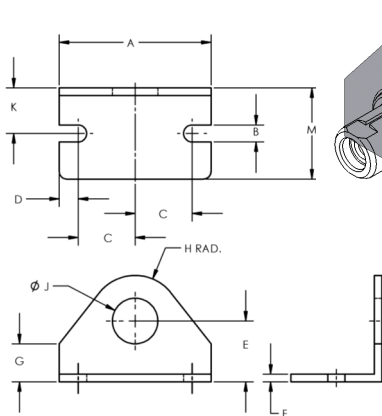
MOUNTING ACCESSORIES



THREADED MOUNTING BLOCK
Material: Steel




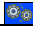
THREADED MOUNTING BLOCK DIMENSIONS FOR THREADED STYLE ONLY

PLUNGER DIA.	5/16"	1/2"	5/8"	1"
PART NUMBER	250-0308 	250-0401 	250-0402 	
A	1.00	1.50	1.50	
B	1.50	2.00	2.00	
C	1.00	1.50	1.50	
D	0.50	0.75	0.75	
E	0.50	0.75	0.75	
F	0.75	1.00	1.00	
G	0	0.56	0.56	
H	0	1.12	1.12	
J	0.28	0.31	0.31	
K	0.56	0.62	0.62	
M	1/2-20 UNF	3/4-16 UNF	1-12 UNF	
N	.18 DIA.	.22 DIA.	.22 DIA.	
P	.18 DIA. THRU. .31 C'BORE X .20 DP, #8-32 SHCS	.22 DIA. THRU. .33 C'BORE X .45 DP, #10-32 SHCS	.22 DIA. THRU. .33 C'BORE X .45 DP, #10-32 SHCS	



ANGLE MOUNTING BRACKET
Material: Steel

ANGLE MOUNTING BRACKET DIMENSIONS FOR THREADED STYLE ONLY

PLUNGER DIA.	5/16"	1/2"	5/8"	1"
PART NUMBER	D-226 	D-241 	C-1337 	D-615-1 
A	1.62	2.50	3.00	3.75
B	0.19	0.28	0.34	1.62
C	0.62	0.94	1.12	1.44
D	0.19	0.31	0.38	0.44
E	0.69	1.00	1.25	1.75
F	0.10	0.12	0.19	0.28
G	0.19	0.62	0.75	0.75
H	0.41	0.75	0.91	1.25
J	0.50	0.75	1.04	1.51
K	0.44	0.56	0.88	1.00
M	0.75	1.50	1.50	1.62

The specifications and data in this publication are believed to be accurate and reliable. It is the responsibility of the product user to determine the suitability of DBM Innovation Inc. products for a specific application. While defective products will be replaced without charge if promptly returned, no liability is assumed beyond such replacement. Specifications subject to change without notice. © DBM Innovation Inc. All rights reserved.